

ENFC PROLIGHT EVACUATORE NATURALE PER INSTALLAZIONE IN COPERTURA



DESCRIZIONE

Gli evacuatori di fumo ENFC PROLIGHT montati sul tetto sono destinati all'evacuazione NATURALE di fumo e gas tossici derivanti da incendi, nonché alla ventilazione comfort.

I prodotti della serie ENFC PROLIGHT sono omologati per l'uso in tutti i paesi dell'Unione Europea sulla base di un certificato di conformità alla norma europea EN-12101-2.

ENFC PROLIGHT EVACUATORE NATURALE PER INSTALLAZIONE IN COPERTURA

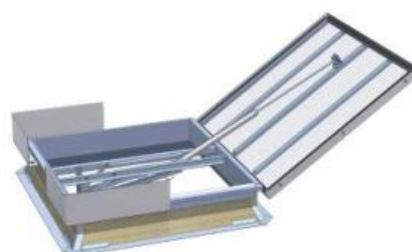
SINGLE LEAF VENTS



ENFC PROLIGHT - C
with straight base (square)

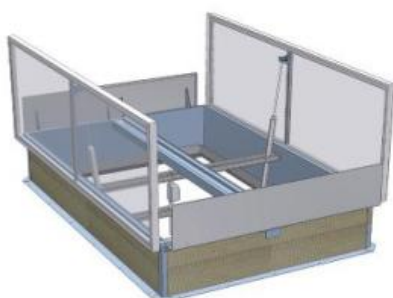


ENFC PROLIGHT - E
with straight base (rectangular)

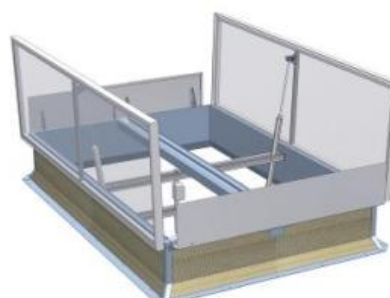


ENFC PROLIGHT - NG-A
with skew base

DOUBLE LEAF VENTS


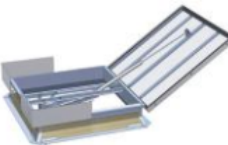
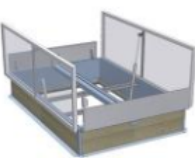
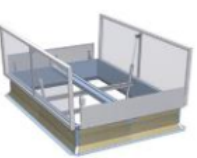


ENFC PROLIGHT - DVP
with straight base



ENFC PROLIGHT - DVPS
with skew base

ENFC PROLIGHT EVACUATORE NATURALE PER INSTALLAZIONE IN COPERTURA

Parameters		Smoke vent (single-leaf)	Smoke vent (single-leaf)	Smoke vent (double-leaf)	Smoke vent (double-leaf)
					
Type		C/E	NG-A	DVP	DVPS
Product classification	Certificate of Conformity 1396-CPR-0040 as per EN 12101-2	<ul style="list-style-type: none"> » Re 1000, Re300 or Re50 – operational reliability during 1000/300/50 cycles of opening and closing to smoke exhaust position, and 10 000 cycles to ventilation position (double function vent), » WL 2000, WL1500 or WL750 – operational certainty of vents under wind stress equivalent to 2000 Pa, 1500 Pa or 750 Pa (depending on type, size and accessories), » T(-25) or T(00) – resistance of vents to low temperature of -25°C or 0°C, » B300 or B600 – resistance of vents to high temperature of 300°C or 600°C (depending on type and accessories), » SL: 250, 550, 750, 950, 1300, 1600, 2000 – operational certainty of vents under snow load N/m² 			
Control	Pneumatic (smoke exhaust)	•	•	•	•
	Electric 230 V~ (ventilation)	•	•	•	•
	Electric 24 V- (smoke exhaust + daily ventilation)	•	•	•	•
	Pneumatic (gas springs) (smoke exhaust and/or ventilation)	•	•	-	-
Glazing	multi-chamber polycarbonate panel	•	•	•	•
	acrylic dome (*)	•	•	-	-
	solid polycarbonate dome (*)	•	•	-	-
	ALu sandwich panel (**)	•	•	-	-
	classification B _{ROOF(t1)} (***)	•	•	•	•
	multi-chamber polycarbonate panel and envelope cover(*)	•	•	•	•
	multi-chamber polycarbonate panel and single or double -layer acrylic dome or solid polycarbonate dome(*)	•	•	-	-

ENFC PROLIGHT EVACUATORE NATURALE PER INSTALLAZIONE IN COPERTURA

